

Klf14 Cas9-KO Strategy

Designer:

Yupeng Yang

Design Date:

2019-7-26

Project Overview

Project Name

Klf14

Project type

Cas9-KO

Strain background

C57BL/6JGpt

Knockout strategy

This model will use CRISPR/Cas9 technology to edit the *Klf14* gene. The schematic diagram is as follows:



- The *Klf14* gene has 1 transcript. According to the structure of *Klf14* gene, exon1 of *Klf14-201* (ENSMUST00000101589.4) transcript is recommended as the knockout region. The region contains all of the coding sequence. Knock out the region will result in disruption of protein function.
- In this project we use CRISPR/Cas9 technology to modify *Klf14* gene. The brief process is as follows: CRISPR/Cas9 system

- According to the existing MGI data, Mice homozygous for a null allele display genome instability and increased tumor incidence with age. Mice homozygous for a conditional allele knocked out in the liver exhibit decreased circulating HDL cholesterol levels.
- The *Klf14* gene is located on the Chr6. If the knockout mice are crossed with other mice strains to obtain double gene positive homozygous mouse offspring, please avoid the two genes on the same chromosome.
- This Strategy is designed based on genetic information in existing databases. Due to the complexity of biological processes, all risk of the gene knockout on gene transcription, RNA splicing and protein translation cannot be predicted at the existing technology level.

Gene information (NCBI)

Klf14 Kruppel-like factor 14 [Mus musculus (house mouse)]

Gene ID: 619665, updated on 3-Feb-2019

Summary



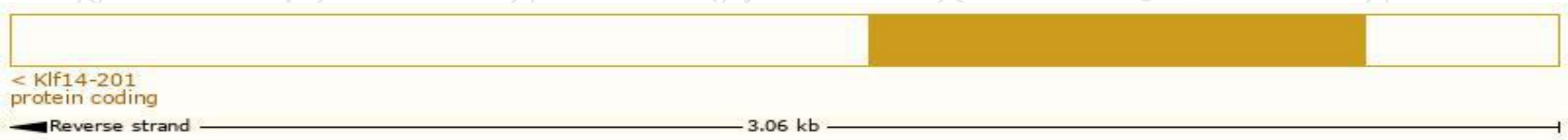
Official Symbol	Klf14 provided by MGI
Official Full Name	Kruppel-like factor 14 provided by MGI
Primary source	MGI:MGI:3577024
See related	Ensembl:ENSMUSG00000073209
Gene type	protein coding
RefSeq status	VALIDATED
Organism	Mus musculus
Lineage	Eukaryota; Metazoa; Chordata; Craniata; Vertebrata; Euteleostomi; Mammalia; Eutheria; Euarchontoglires; Glires; Rodentia; Myomorpha; Muroidea; Muridae; Murinae; Mus; Mus
Also known as	5330411L03Rik, AL022736, BTEB5
Orthologs	human all

Transcript information (Ensembl)

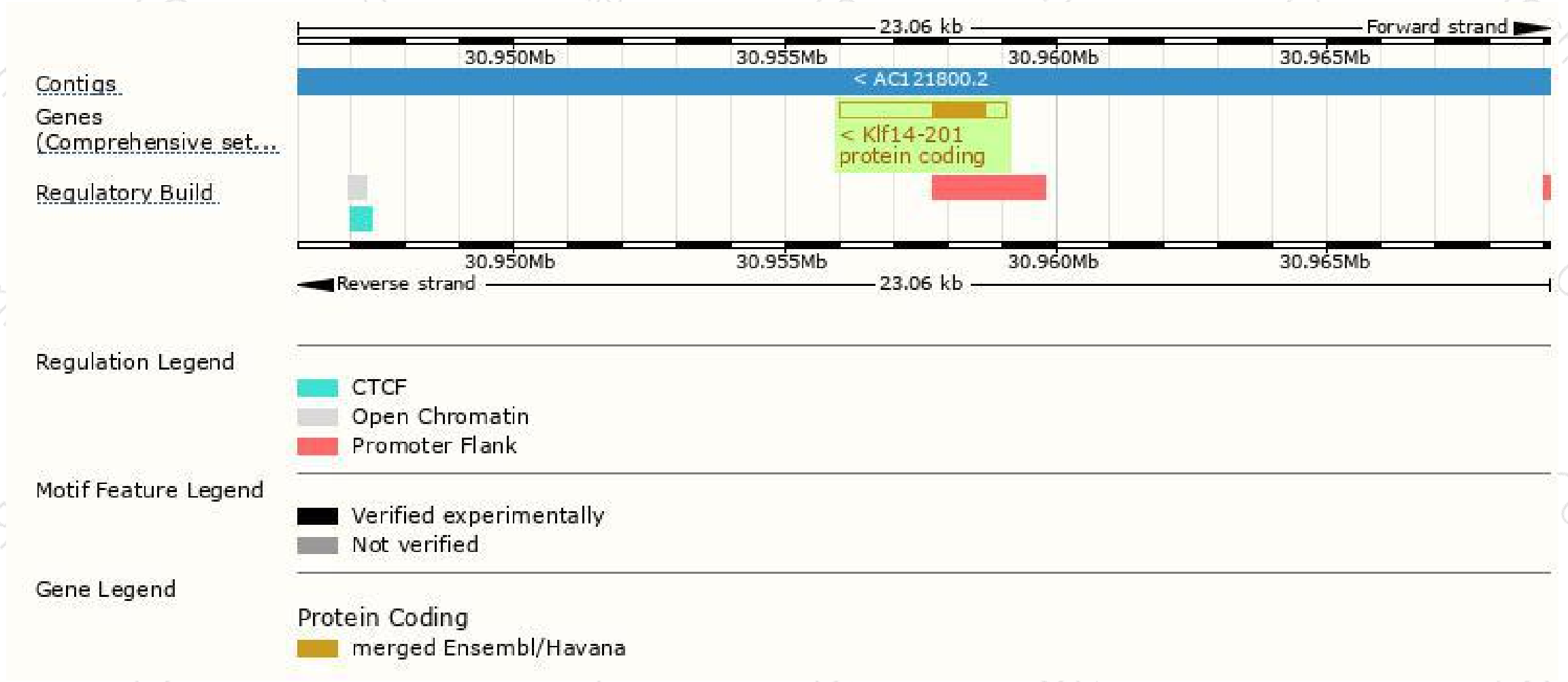
The gene has 1 transcript, and the transcript is shown below:

Name	Transcript ID	bp	Protein	Biotype	CCDS	UniProt	Flags
Klf14-201	ENSMUST00000101589.4	3056	325aa	Protein coding	CCDS51744	Q19A41	TSL:NA GENCODE basic APPRIS P1

The strategy is based on the design of *Klf14-201* transcript, The transcription is shown below



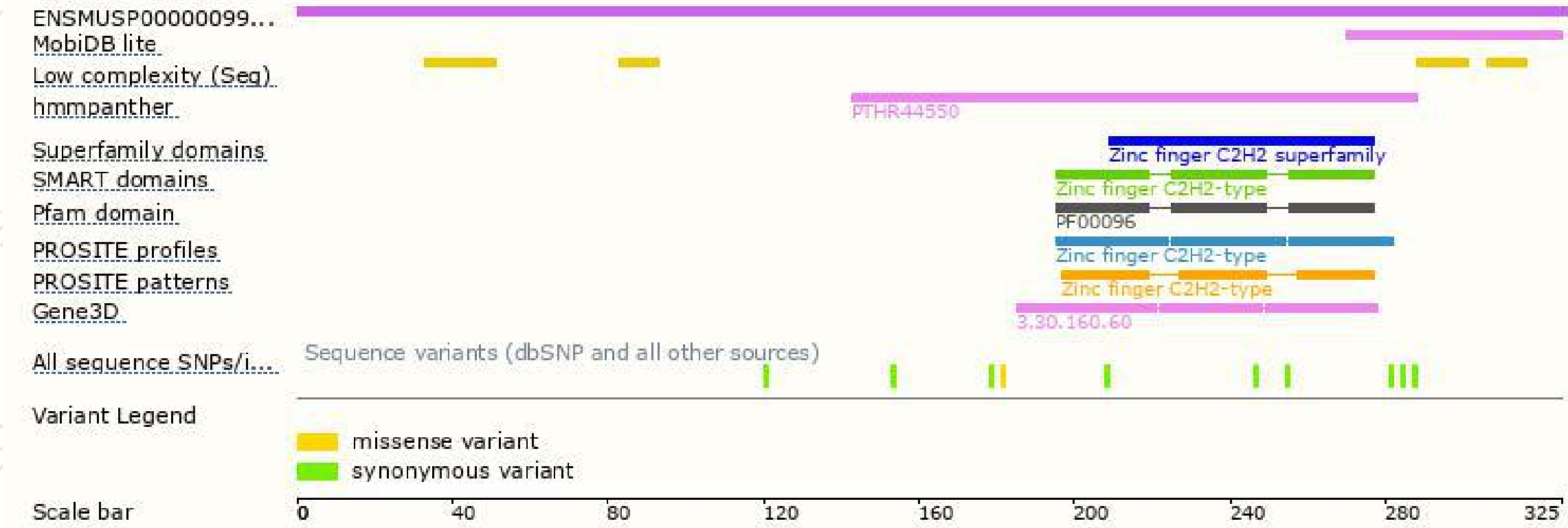
Genomic location distribution



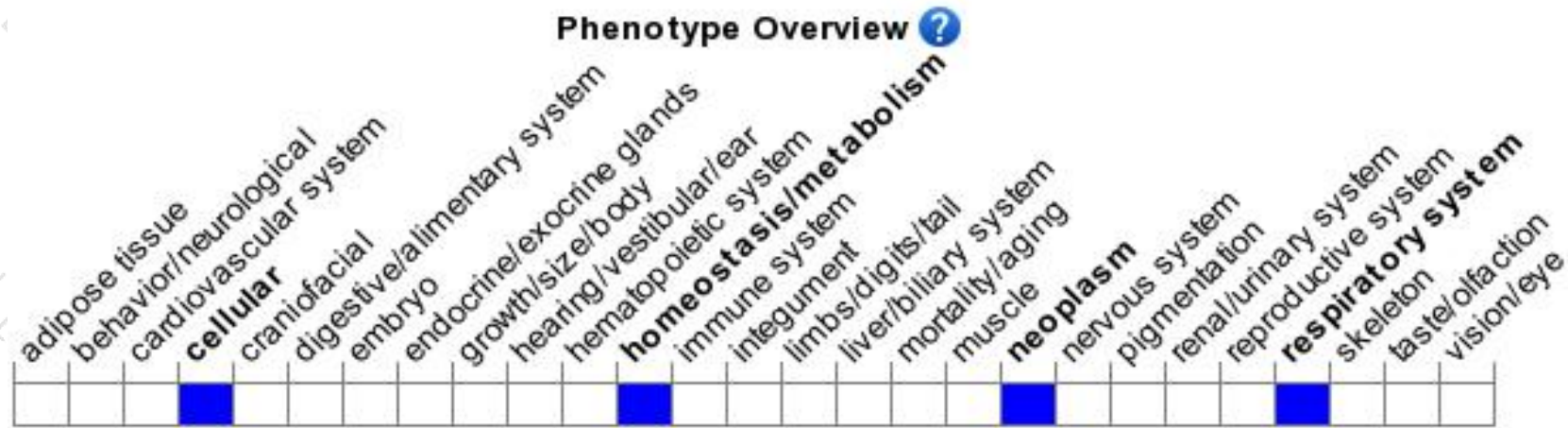
Protein domain



集萃药康
GemPharmatech



Mouse phenotype description(MGI)



Phenotypes affected by the gene are marked in blue. Data quoted from MGI database(<http://www.informatics.jax.org/>).

According to the existing MGI data, Mice homozygous for a null allele display genome instability and increased tumor incidence with age. Mice homozygous for a conditional allele knocked out in the liver exhibit decreased circulating HDL cholesterol levels.

If you have any questions, you are welcome to inquire.

Tel: 400-9660890

